

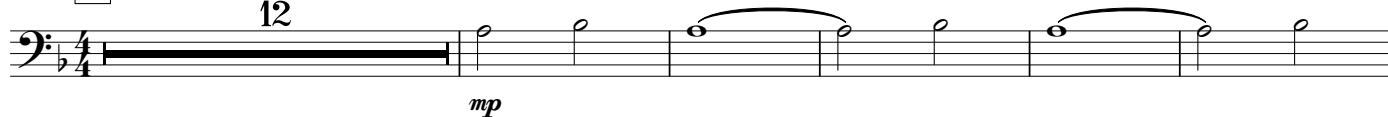
MY COUNTRY TIS OF THEE

TEXT BY SAMUEL F. SMITH
ARRANGED BY RICKY VALADEZ

♩ = 120

A

12



mp

18

B

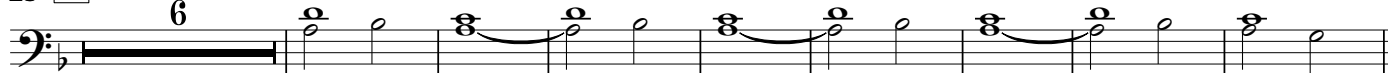


mf

25

C

6



39

D



47

E



54



61

F

4



69



73



77

G



MY COUNTRY 'TIS OF THEE
CELLO

85

92 **H**

98



105



109

